



SOUTHEAST CIRCULAR

Publication of Water Environment Association of Texas,
Southeast Texas Section

Featured Event — Missouri City Water Plant Tour

Back by popular demand, the January Meeting will be another facility tour! Missouri City has a new membrane water treatment plant online and WEAT members are invited to tour the facility on Thursday, January 26th, 2012.

The plant includes an earthen 100 MG raw water reservoir, flocculation followed by high-rate plate settlers for sedimentation, microfiltration using Pall Corporation membrane system, on-site 12.5% sodium hypochlorite generator, 1.5 MG clearwell, a finished water transfer pump station, and on-site residuals handling prior to landfill disposal of dried solids. The plant initially operates at 10 MGD but will ultimately provide 33 MGD.

The plant was constructed in response to the City's Groundwater Reduction Plan which requires the City and all MUDs in their ETJ to use 30% surface water by 2013. The City's surface water sources for this new plant are the Brazos River and the Gulf Coast Water Authority.

Phase 1 of the plant (10 MGD) was bid at \$27.1 million.

The GRP Oversight Committee included HDR, Enprotec/Hibbs & Todd, Water Resources Management and Pepper-Lawson.

Do not miss the opportunity to visit this exceptional facility. See pages 6 and 7 for a map and parking instructions.




Aerial Photo 727.520.8881 www.aerophoto.com Missouri City Surface Water Treatment Plant Image # 101130 6068 Date 11.30.10

Meeting Notice

Inside this issue:

The President's Message	2
Meeting Sponsors	3
2011-2012 Officers	4
Supporters of WEAT	5
Map	6
Parking	7



**Thursday
January 26th**

Sponsor:

EI²

Missouri City Water Plant Tour

Time:	Registration	11:00
	Lunch	11:30
	Tour	12:00

RSVP: Monica Stiggins (281-589-7257)
or monica.stiggins@klotz.com

Place: See maps on pages 6 and 7

Luncheon: \$20 (includes box lunch)

Please RSVP no later than Jan. 24th

The President's Message

Dear WEAT Members,

Welcome back! I hope everyone had a great holiday season. We have a pretty exciting start to 2012 and it all kicks off next week. After the successful November meeting where we toured the City of Houston 69th Street Wastewater Treatment Plant, we have another tour planned for our members on January 26th. This time it will be a water facility and will be a tour of the brand new Missouri City Surface Water Treatment Plant. The meeting will be a joint meeting with our friends at the Texas Public Works Association (TPWA). Again, I encourage everyone to come out for the tour and bring younger colleagues that may have not have been to many water treatment plants.

Also in the works is our joint technical seminar with AWWA. Our Seminar Planning Committee has some great guests lined up so far and we are finalizing the agenda and dates. The meeting will be held at Hess in late February. We will let everyone know as soon as we have a firm date. We always have a great agenda and turnout and this year will be no different.

I probably sound like a broken record but we are very close to launching our new section website! We had a setback when we learned that our Website Chair, Cory Henry, was leaving Houston and we have brought in other officers to help take up the slack. I wanted to wish Cory good luck and thank him for all of his hard work over the years.

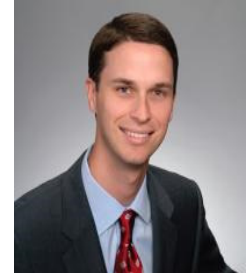
Until our website is complete, it will be unavailable so please RSVP for the tour to Monica Stiggins at (281) 589-7257 or Monica.Stiggins@klotz.com

I want to say a special thanks to EI² for sponsoring the January treatment plant tour. Please contact me or Frank Stephens (Frank.Stephens@arcadis-us.com) if you are interested in sponsoring a meeting or placing your company's advertisement in our newsletter.

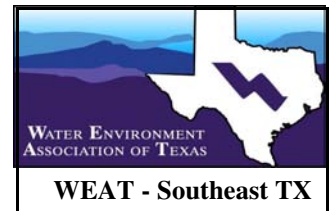
We will inform our membership of the exact dates of the next meetings as soon as possible but see below for our schedule for the rest of the season.

I look forward to seeing you all at the field trip next week. For those that can not attend the tour, we hope to see you at the next meeting

Richard



Richard Weatherly, P.E.
Section President



Southeast Section Events Calendar

WEAT/AWWA Joint 1/2 day Seminar (HESS)

February (date TBD)

Engineering Ethics Meeting at HESS

May

Meeting Sponsors for January

environmental **EI²**
improvements, inc.

“Your avenue to water
and wastewater treatment
solutions.”

Larry Kelm
Lyle Milstead
Bucky Richardson

Today’s demanding marketplace requires a full-service manufacturers’ representative who has the resources to make your project successful.

Our diverse staff is comprised of both inside and outside sales specialists with education and experience in such disciplines as engineering and construction management all ready to assist you with equipment selection, application, cost estimating and service.

Some companies view good customer service as a lost art but at EI² it’s our way of doing business every day.

www.ei2texas.com



SOUTHEAST CIRCULAR

Publication of Water Environment Association of Texas, Southeast Texas Section

2011-2012 Officers

President

Richard Weatherly, P.E.

Freese and Nichols, Inc.
Phone: 713-600-6824
raw@freese.com

President-Elect

Lindsay Kovar, P.E.

Brown & Gay Engineers, Inc.
Phone: 281-558-8700
lkovar@browngay.com

Vice-President

Sarah Berkey, P.E.

LAN, Inc.
Phone: 713-821-0408
SMKresta@lan-inc.com

Treasurer

Aubrey Lofton

CDMSmith
Phone: 713-423-7300
LoftonAM@cdm.com

Secretary

Monica Stiggins, P.E.

Klotz Associates, Inc.
Phone: 281-589-7257
monica.stiggins@klotz.com

Past President

Vinoth Manoharan, P.E.

LJA Engineering, Inc.
Phone: 713-953-5260
vmanoharan@ljaengineering.com

Committee Chairs

Section Representative

Kim Chanslor, P.E.

CDMSmith
Phone: 713-423-7353
ChanslorKM@cdm.com

Awards Committee

Kim Chanslor, P.E.

CDMSmith
Phone: 713-423-7353
ChanslorKM@cdm.com

Water for People & Young Professionals Committees

Benji Addo, P.E.

Pate Engineers, Inc.
Phone: 832-590-7132
BAddo@PateEng.Com

Scholarship Committee

Lindsay Kovar, P.E.

Brown & Gay Engineers, Inc.
Phone: 281-558-8700
lkovar@browngay.com

Public Education Committee

Tian Wang, P.E.

CDMSmith
Phone: 713-423-7300
wangt@cdm.com

Website Committee

Lindsay Kovar, P.E.

Brown & Gay Engineers, Inc.
Phone: 281-558-8700
lkovar@browngay.com

Sponsorship Committee

Frank Stephens, P.E.

Arcadis
Phone: 713-953-4800
Frank.stephens@arcadis-us.com

Program Committee

Meera Victor P.E.

Carollo Engineers
Phone: 281-872-4512
mvictor@carollo.com



Richard



Lindsay



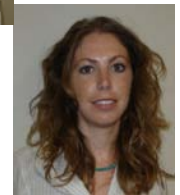
Sarah



Aubrey



Monica




Kim



Vinoth

Supporter's of WEAT – Section 9



HARTWELL ENVIRONMENTAL CORPORATION


Houston
Austin
Dallas
Tulsa

Water and Wastewater Treatment Equipment

Tomball, TX 281.351.8501 Austin, TX 512.347.7676

Arlington, TX 817.446.9500 Tulsa, OK 918.299.8555

www.hartwellenv.com




Gaylord Investment Company

Joe Schmid
Charlie Milstead
Carl R. Baker

Water and Wastewater Leased Equipment

P.O. Box 79266 Phone: 713/461-1111
Houston, TX 77279 Fax: 713/461-1821
e-mail: carl@gaylordhou.com Cell: 832/259-2567




Vision Equipment

Bill Loyd

Environmental Process Technologies

Office: 281-376-9828
Fax: 281-376-9151
Fax: 210-568-2233
Mobile: 281-467-2461

17907 Moss Point Drive
Spring, Texas 77379 Email: bill@visionequipment.net



ENVIRONMENTAL TREATMENT TECHNOLOGIES, INC.

Peter J. Czerwinski, P.E.
Brenda Haws

Your Engineered Equipment Specialists

13306 Northshore Drive • Montgomery, Texas 77356
Phone: 936-448-6520 • FAX: 936-448-6523

To advertise with us, Contact Frank Stephens @ (713) 953-4800 or frank.stephens@arcadis-us.com

SOUTHEAST CIRCULAR

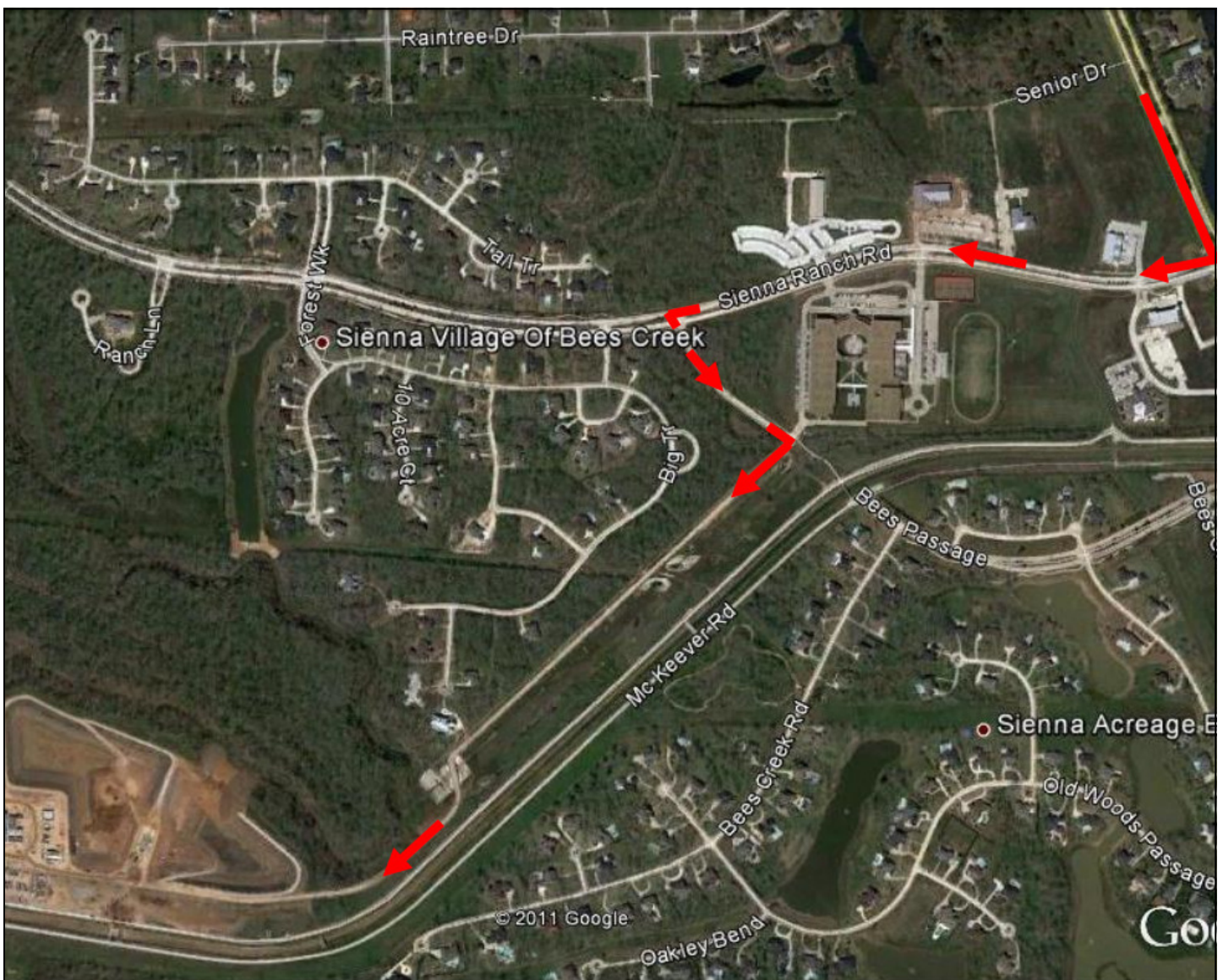
Publication of Water Environment Association of Texas, Southeast Texas Section

DIRECTIONS TO Missouri City Water Treatment Plant

8850 ½ Sienna Ranch Road, Missouri City, Texas

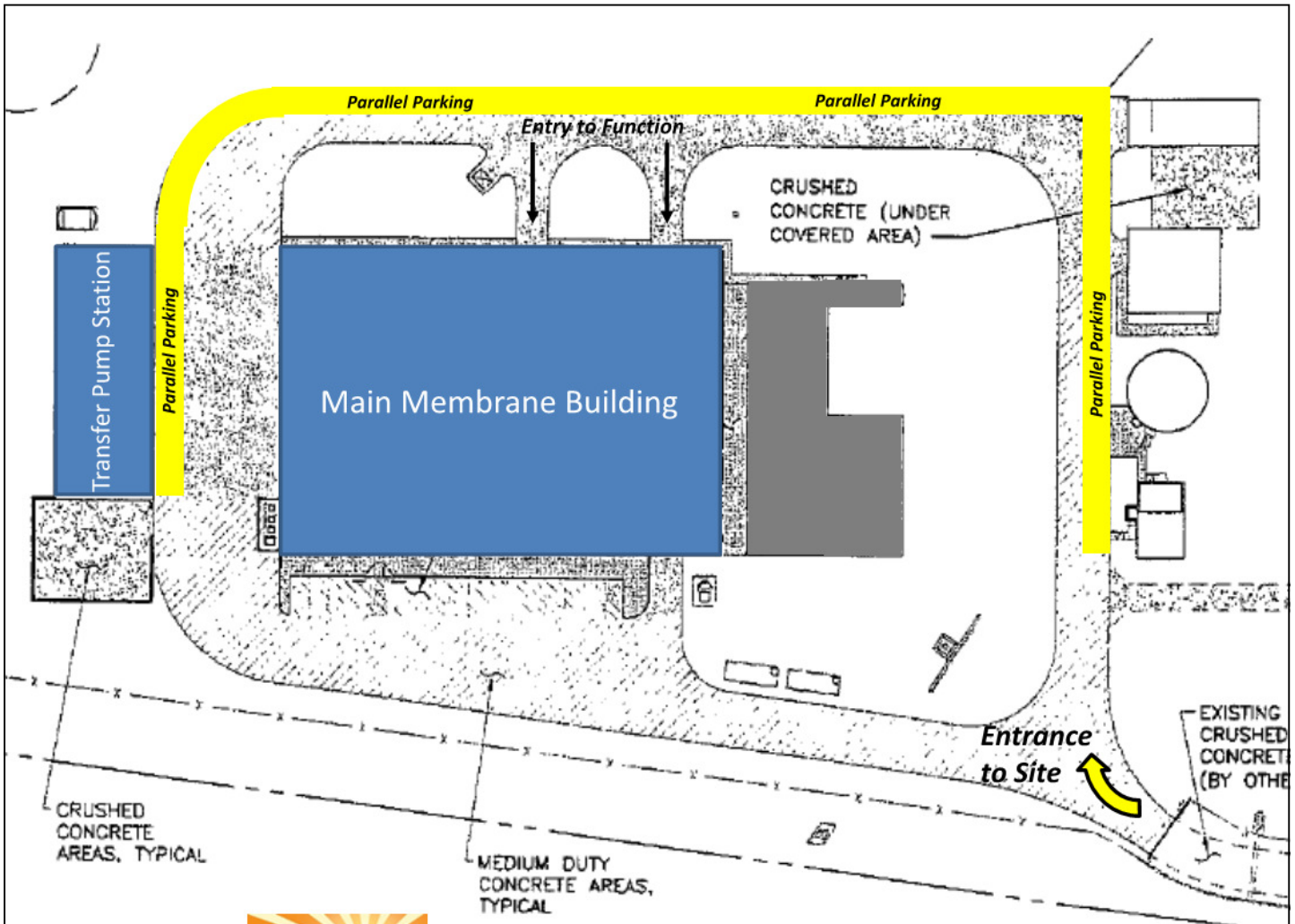
From the intersection of Highway 59 and Highway 6 head southeast on Highway 6 for about 8 minutes then turn right on Sienna Parkway. Turn right again on Sienna Ranch Road. Take first left after middle school onto Bee's Passage. At end of Bees Passage turn right on gravel road. This road will lead you to SE entrance of Plant.

Note that parking is limited so carpooling is encouraged!



Parking at the Missouri City Water Treatment Plant

Please note that parking is limited so carpooling is strongly encouraged.



Surface Water Treatment Plant – Parking Plan

Enter the site at the SE corner entrance. Proceed to the north and around facility. Attendants will be providing direction.