



Water Environment
Association of Texas



TEXAS WATER ART CONTEST

IN HONOR OF "IMAGINE A DAY WITHOUT WATER"

ATTENTION: K-6 EDUCATORS!

WE NEED YOU FOR
THE 2024 WATER
ART CONTEST!



WHAT IT TAKES:

1. Sign up to be a participating classroom **by Oct. 4, 2024** -- **see QR code below**
2. Include a water-related activity in your Fall 2024 lesson plan to emphasize its importance (*optional but encouraged!*)
3. Instruct students to create art illustrating the **theme**:
 - a. **How are you Water Wise?**
(Or: **Why should people be Water Wise?**)
4. Collect art entries from your students and send to contest **between Sep. 3 - Oct. 25, 2024**

Contact for details **and/or** to invite a water quality pro to your class. Volunteers can talk about careers, water conservation, environmental protection, engineering, etc.

Contact: Nyla Langford
nblangford@sig-auto.com
469-619-1241 ext 120

Sign the Interest Form
to receive email
updates! -->



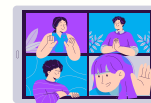
GET CREATIVE WITH STEM

Lessons on the water environment and the importance of water to human civilization can apply to a wide range of ages and TEKS objectives.



Add some creativity to your classroom by pairing this art contest with an activity focused on the water environment. We can even help you find guest speakers!

CONTEST AWARDS



- Up to 13 WINNERS will be featured in the 2025 Calendar **AND** receive a prize
- Top 3 winners (1st, 2nd, & 3rd Place) **AND** their sponsoring teachers will receive a **SPECIAL PRIZE!**
- Winners and Honorable Mentions will be recognized in online awards celebration

PRIZES TO BE ANNOUNCED!

Previous prizes included STEM activity kits, art supplies, books, and more! Teacher prizes included Amazon gift cards. Suggestions welcome!



Winning students' artwork will be featured in a calendar like these!



WHAT DOES IT MEAN TO BE WATER WISE? IT CAN INCLUDE...

• CONSERVING WATER

- Pay attention to how much water you use personally OR that is used by home appliances (washing machine, dishwasher, toilets and showers, etc.)
- Conserve water during times of high demand or extreme high temperatures



• KNOWING YOUR LOCAL WATER SYSTEM

- Understand your watershed (where water comes from, how it's treated, and where wastewaters and stormwaters flow)
- How much work it takes to get water to your home faucet
- How humans fit into the water cycle



• PROTECTING WATER SOURCES AND THE ENVIRONMENT

- Protect source water from litter and contamination
- Pick up after your pets to preserve water quality



CONTEST TIPS FOR SUCCESS: HERE'S HOW STUDENTS CAN "WOW" THE JUDGES!

1. SEARCH FOR INSPIRATION

- a. Get outside and observe the natural world
- b. Think about where, how, and why water is used in the built world
- c. Play with water respectfully (enjoy your local environment!)

2. EXPRESS YOURSELF / BE CREATIVE

- a. We want to see your unique design and perspective... don't just copy a friend
- b. Think outside the box!
- c. Don't limit yourself on materials and ideas

3. TAKE TIME AND CARE

- a. Make sure artwork is in a polished, final version -- only the best will win!
- b. Teachers may want to:
 - i. Team up with an Art teacher/classroom for a joint project
 - ii. Allow students small amounts of time spread over multiple days/weeks

SUBMISSION GUIDELINES

- Size: 8.5"x11" in wide / landscape format
- One entry per student
- Entries can be submitted by...
 - Mail to Nyla Langford, 17950 Preston Rd #300, Dallas TX 75252
 - Email to nblangford@sig-auto.com
 - Online form (must have Google account): <https://bit.ly/TXWaterArt2024> or use QR code below

Winners are selected based on:

- Visual Impact
- Creativity
- Water Content / Theme
- Craftsmanship / Skill



*Please send digitally scanned image or photograph for electronic entries. **When taking photographs of artwork, please avoid angles, shadows, and blurriness that can obscure the artwork.** Winning entries will be printed in a calendar.



GOOGLE ENTRY FORM



CONTEST INFORMATION